



2013-14 Annual Report



Australian Government



Queensland Government

Who does FBA work with?

Delivery Partners: FBA makes on-ground change happen by devolving funds to five major delivery partners: Central Highlands Regional Resources Use Planning Cooperative (CHRRUP); Fitzroy River and Coastal Catchments (FRCC); Dawson Catchment Coordinating Association (DCCA); Boyne Calliope Sub Region and Three Rivers Sub Region.

Australian Government: Through various funding programmes, including the Reef Programme, and one-off grants.

Queensland Government: Through Regional NRM Investment Program funding and one-off grants.

Local Government: To provide feedback on planning, deliver projects and raise community awareness.

Farmers and Graziers: To develop, manage and monitor projects on agricultural land - land managers contribute at least 50% of the value of the project and in many cases provide much more in both cash and in-kind.

Industry: To share information that supports sustainable management of the environment.

Traditional Owners: By supporting Fitzroy Basin Elders Committee to facilitate gatherings between Traditional Owners and encourage involvement in NRM activities.

Community groups: To complete grass roots natural resource management projects with wide public benefits and build capacity of dedicated volunteers.

Source Fitzroy: Our commercial arm, which provides additional NRM services to individuals and businesses.

Fitzroy Partnership for River Health and Gladstone Healthy Harbour Partnership: FBA is the host organisation for and a major partner of both partnerships.

CONTACT YOUR LOCAL GROUP

Fitzroy & Capricorn Coast:

Fitzroy River and Coastal Catchments Inc. (FRCC)

P | 4921 0573 E | admin@frcc.org.au

Central Highlands region:

Central Highlands Regional Resources Use Planning Cooperative (CHRRUP)

P | 4982 2996 E | admin@chrrup.org.au

Dawson region:

Dawson Catchment Coordinating Association Inc. (DCCA)

P | 4993 1004 E | admin@dcca.net.au

Isaac, Connors and Mackenzie Rivers:

Three Rivers Sub Region

P | 4985 7511 E | admin@frcc.org.au

Gladstone and Boyne Valley:

Boyne Calliope Sub Region

P | 4975 6315 E | admin@frcc.org.au



About Fitzroy Basin Association

Fitzroy Basin Association Incorporated (FBA) is one of 14 Natural Resource Management (NRM) regional bodies in Queensland and 56 Australia wide that help communities manage natural resources more wisely. NRM is about finding the balance between protecting the environment and land use needs of the community, agriculture and industry.

FBA strives to protect natural assets like habitats and ecosystems, wetlands, plants and animals; improve land condition and land management practices; and ensure healthy waterways flowing to the reef.

FBA is the voice for sustainable management of the environment in central Queensland and has been the leading NRM group in the region since 1994. We invest in on-ground projects, participate in committees and advisory groups, support community consultation, respond to development proposals, talk directly to governments and manage/host Partnerships. We have years of experience working with the community, graziers, farmers and industry to improve how our landscapes and waterways are managed, to ensure they remain in good condition for many more generations!

Our vision:

A community that understands, values and uses its natural and cultural resources wisely to coexist in a vibrant and prosperous region.

Our mission:

To achieve resilient, healthy catchments through strong, independent leadership of an engaged regional community.

Our region:

We work across an area more than 156,000 km² in size extending from Nebo in the north to Injune in the south, and west to the Drummond Range. As well as the catchments of the Fitzroy River, we cover adjacent coastal waterways and the Boyne and Calliope Rivers.

© Fitzroy Basin Association Incorporated 2014

Fitzroy Basin Association Incorporated's Annual Report 2013-14 has been prepared with due care and diligence using the best available information at the time of publication. FBA holds no responsibility for any errors or omissions and decisions made by other parties based on this publication.



From the Chair

Ongoing dry conditions have had a significant impact on graziers and farmers across the Fitzroy Basin in 2013/14. Despite this, I believe a great proportion of land managers are thinking long term and have committed to improving their practices by undertaking on-ground work to improve local water quality and protect the Great Barrier Reef.

Our region has productive farming land but is also resource rich, with the majority of the state's coal mines operating in the Fitzroy Basin and an expanding coal seam gas footprint. With this in mind our board recognised the need for a coexistence forum, held prior to our AGM, bringing together a range of speakers from different

backgrounds to provide their insights on how to make coexistence a reality. Since the forum our board has developed a paper on the use of CQ's natural resources and will work with relevant stakeholders from resource, agriculture, regional and indigenous communities and all levels of government to develop a regional framework. Participation is voluntary but the hope is that it will lead to better natural resource development and operations in CQ and add value to strained relationships.

Six new members were elected to our board at the AGM. Our new members bring with them a wealth of knowledge and skills beneficial to the ongoing success of FBA. Outgoing members had served multiple terms and I acknowledge and thank them for their significant impact on FBA's strategic direction and vision. The significant interest from candidates to join our board demonstrates the strength of our organisation's character and our strong reputation as the region's leading Natural Resource Management group.

Since our AGM, improving our corporate governance processes through reviews to the governance charter and the constitution has been a strong focus for our board as well as financial delegations and policy updates this year.

On a more personal note, as a grazier that was on the producer reference group, it is with great pride that I have watched the Grazing Best Management Practice (BMP) Program grow, with the 100th grazier, Robert Sherry from St Lawrence completing the full program in March. Grazing BMP, developed by FBA in partnership with AgForce and Queensland Department of Agriculture Fishery and Forestry, is continuing to expand with glowing reviews from graziers and adoption from two other regional natural resource management bodies in Queensland. With the Australian and Queensland Government both pledging financial support, our program will continue to benchmark performance, share its successes and advocate for graziers.

One of the key benefits of our best management practices programs, whether it's grazing, grains or cotton is the opportunity for networking with others within the industry. The experiences and knowledge shared between peers can be just as valuable as the content derived from the workshops. It's also important for us to come together and recognise that we're not alone, that we're all struggling with similar issues in the face of a drought.

Finally I acknowledge the hard work and ongoing commitment of our staff. I am proud to be Chair of FBA, as together we are making a difference to the ongoing health of Central Queensland's natural assets. The future for FBA is bright.

Ian MacGibbon

From the CEO



The continued success of our organisation in meeting, and in some cases exceeding, our targets from the Australian and Queensland governments is directly attributable to our talented team of staff within the organisation and throughout our network of delivery partners.

More than \$11M was invested in the Fitzroy Basin in 2013/2014 to improve water quality, foster on-ground best management practices, protect special plants and animals, manage pests, restore land, and care for wetlands and creeks.

The year began with the continuation of the Australian Government Reef Programme (formerly known as Reef Rescue), with FBA securing \$12.5M over 3 years. We developed a prioritisation tool to assess projects for greatest impact on water quality and the health of the Great Barrier Reef. This has been adopted by our delivery partners and is proving to be a successful approach with 105 landholders completing on-ground projects for this term.

We have worked with resource companies this year who have chosen to make investments in Central Queensland. Santos GLNG provided additional funding towards important research into the Palm Tree and Robinson Creek Wetlands near Taroom, while Glencore provided funding to support graziers to improve their profitability and sustainability. We will continue to identify areas where we can work with resource companies for mutually beneficial outcomes for our region.

Land managers in priority areas in the Fitzroy, Dawson and Calliope regions received funding to repair damage to their infrastructure and landscapes, caused by the floods resulting from ex-tropical cyclone Oswald in 2013. A total of 77 projects were completed with erosion control work, infrastructure repairs and access to expert advice the key to building resiliency for affected landholders for the future.

The Central Queensland Sustainability Strategy is currently under review. We are facilitating the strategy's development with the help of scientists and technical experts and are working in consultation with governments, key industry representatives and the community to ensure the strategy meets everyone's needs or expectations.

Engaging the community to take part in revegetation, rehabilitation and debris removal activities has helped improve the condition of three creeks and 14 beaches in our region. Debris is a serious threat to marine life and planting trees helps protect fragile creek banks and improves local water quality, so we thank our community for participating in these activities and encourage ongoing involvement.

In March, FLOW Visitors Centre celebrated its second anniversary. More than 10,000 people have visited our centre to learn more about the region and what we are doing to protect it, for education seminars or group visits and for school holiday activities.

We continue to host and are a major partner of the Fitzroy Partnership for River Health (FPRH) and the Gladstone Healthy Harbour Partnership (GHHP). I continued in the role of Chair for GHHP with the partnership officially launched in November. We also host the Regional Landcare Facilitator and I congratulate Landcare Australia for reaching their 25th anniversary this year.

I sincerely thank my team at FBA and our network of delivery partners for their hard work and dedication to positive outcomes for our region's natural assets. Our collective achievements continue to grow each year as we strive to achieve resilient and healthy catchments.

Paul Birch

2013 - 14 highlights

\$11.3 MILLION

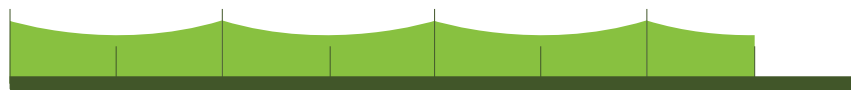
Funds delivered by FBA on-ground to manage natural resources and improve water quality.



OVER 10,000 PEOPLE

have visited FLOW, FBA's Visitors Centre since it opened in 2012.

154 Watering points installed to reduce cattle access to creek beds.



226 Kilometres of streams and creeks protected.

\$3.3 MILLION

Invested by land managers in on-ground projects – represents cash, the value of labour and project management.

1,381 Land managers attended best management practice workshops, received training in computer mapping, GPS and pasture budgeting skills.



433ha of beach cleared of marine debris.



1,700 trees planted

to protect creek banks and reduce erosion.

FIRST EVER

reports and guidelines for management of Palm Tree and Robinson Creek Wetlands developed.

GOVERNANCE

training for Traditional Owners and elders on boards.

OVER 3,700

people like us on facebook.

10ha of weed control undertaken at Fitzroy River Turtle nesting banks.

105 projects completed to reduce erosion and/or improve water quality.

OVER 100

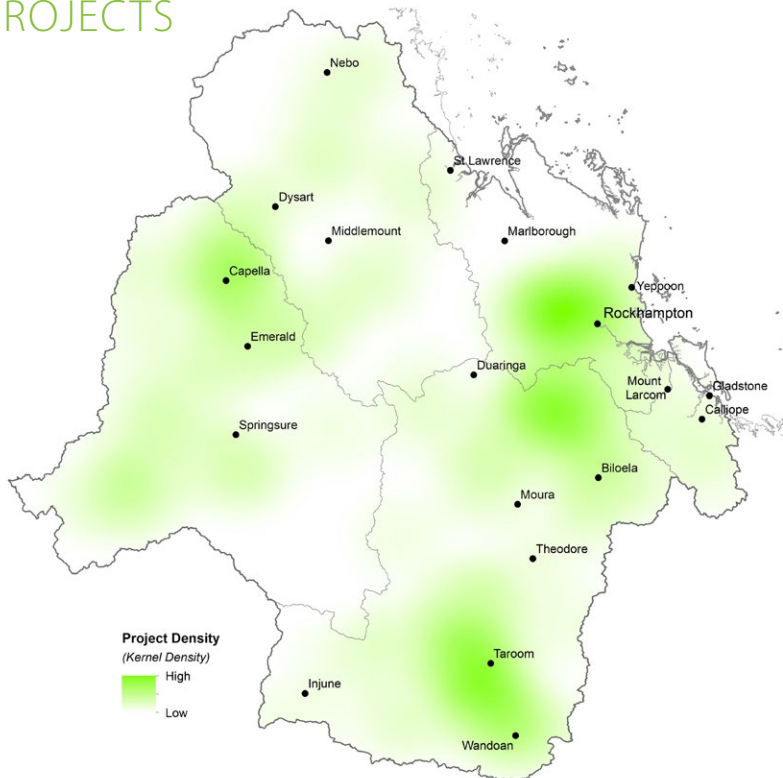
graziers have completed the Grazing BMP program.

3 school based indigenous trainees completing Certificate II in Conservation and Land Mangement.



ALMOST 700,000ha of pest animal and weed control on farming land and sensitive ecological areas.

REEF PROGRAMME PROJECTS



2,000 shrubs and forbs (phorbs) planted to supplement existing native vegetation in the Bridled Nailtail Wallaby corridor.

13 groups involved in on-ground conservation projects including revegetation, weeds and erosion control.



87.7 Kilometres of pipeline funded for watering systems that protect waterways.

Year in review



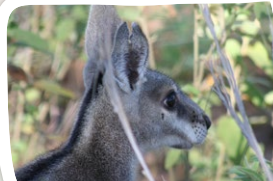
Water quality

FBA supported a range of activities to improve water quality and protect the reef. This included working with farmers and graziers to protect creeks, rivers or wetlands on their properties; supporting or advising on research projects; membership of waterway partnerships and community engagement activities to improve local waterway health. Funds were also obtained for the regions Water Quality Improvement Plan.



Best Management Practices

Over 100 graziers completed the Grazing Best Management Practices (BMP) program, an initiative of FBA, AgForce and the Queensland Department of Agriculture, Fisheries and Forestry. Grains BMP workshops have also continued across the region. Graziers and farmers valued the opportunity to benchmark and improve their business through access to training opportunities and expert advice. Visit bmpgrazing.com.au or fba.org.au to get involved.



Protected species

Monitoring and management of habitats for the Bridled Nailtail Wallaby, Fitzroy River Turtle, Kroombit Tinker Frog, Kroombit Tree Frog and Australian Snubfin Dolphin continued, to help protect these species.



Capacity building

FBA and our delivery partners offered a range of workshops and customised training opportunities throughout the year for graziers and farmers. Over 1,200 graziers and 164 farmers (grains, cotton and horticulture) attended these sessions to improve their knowledge of land management practices and to learn more efficient farming techniques.



Wetlands

A comprehensive research study was undertaken to develop guidelines for the management of Palm Tree and Robinson Creek Wetlands. Staff attended training on wetlands assessments, hosted or supported community events at local wetlands and developed programs for wetland protection at Shoalwater and Corio Bay and Kinka wetlands.



Flood Recovery

Land managers in priority areas in the Fitzroy, Dawson and Calliope catchments were supported to repair flood damaged landscapes and recover from ex-tropical cyclone Oswald. Activities included infrastructure replacements, erosion control earthworks and expert advice to return properties to a productive state and build resilience.



Pests and weeds

Pest plant and animal species have a negative and widespread impact on farming land and sensitive ecological areas. Landholders in target areas were engaged in integrated feral pig and wild dog control measures. Awareness activities to stop the spread of Tilapia, a pest fish were also a priority. Parkinsonia, Prickly Acacia, and Cat's Claw Creeper (all Weeds of National Significance) were targeted in priority areas across the region.



Central Queensland Sustainability Strategy 2030 (CQSS2030)

FBA is facilitating the development of the CQSS2030 to help shape the future of Natural Resource Management in our region. The strategy looks at the region's resources (land, water and biodiversity), how they support regional communities, and the risks to those resources. Engagement in the draft strategy is ongoing.



FLOW Visitors Centre

Over 10,000 people have visited FBA's fun, free and interactive public space - FLOW Visitors Centre. Almost 150 school groups have visited the centre since it opened in 2012 for tailored education sessions. The centre, located in the old Post Office Building, Cnr East and Denham Streets, Rockhampton is a must see for all ages and is open Tuesday to Friday, 10am to 4pm.



Community awareness

FBA and our delivery partners attended numerous events throughout the year to showcase our work and get people involved and engaged. We also highlighted project milestones and outcomes throughout the year with help from the local media and via our social media channels.

Statement of Financial Position

For year ended 30 June 2014

	2014	2013
	\$	\$
Current Assets		
Cash on hand	8,322,516	3,177,719
Accounts receivable and other debtors	240,032	1,563,175
Total Current Assets	8,562,548	4,740,894
Non-current Assets		
Property, plant and equipment	276,019	434,427
Total Non-current Assets	276,019	434,427
TOTAL ASSETS	8,838,567	5,175,321
Current Liabilities		
Accounts payable and other payables (inc. grants)	5,901,865	2,902,721
Employee provisions	373,278	195,986
Non-current Liabilities		
Provisions	89,151	125,325
Total Liabilities	6,364,294	3,224,032
Net Assets	2,474,273	1,951,289
Equity		
Retained surplus	2,474,273	1,951,289
TOTAL EQUITY	2,474,273	1,951,289

Statement of Comprehensive Income

For year ended 30 June 2014

	2014	2013
	\$	\$
Revenue	15,123,048	22,379,552
Employee expenses	2,957,658	3,448,737
Depreciation and amortisation expenses	157,679	260,552
Rental expense	362,210	361,770
Project expenses	11,053,101	16,535,084
Sundry expenses	69,417	84,736
Net current year surplus	522,983	1,688,673
Net current year surplus attributable to members of the entity	522,983	1,688,673

This is an abridged version. A full copy of the Fitzroy Basin Association Inc. financial statements for the year ended 30th June 2014 is available by contacting:
(07) 4999 2800 | admin@fba.org.au



FBA in focus



Stocktake workshop



CORS network at work in CQ



Watering point to keep cattle from creek banks



Blitz to clear our coastline of debris



Weed removal on North Keppel Island



100th grazer to complete Grazing BMP



Managing our wetlands



Uncovering the health of Moores Creek



Awareness raising to stop the spread of Tilapia

Want to know more?

Visit our website
www.fba.org.au

Like us on facebook
www.facebook.com/fbafriend

Follow us on Twitter
[@FBAupdate](https://twitter.com/FBAupdate)

Subscribe to our newsletter
admin@fba.org.au

Visit FLOW Visitors Centre
Old Post Office, Cnr East & Denham Sts, Rockhampton

Call us
(07) 4999 2800