

# Arresting stream bank and gully erosion in the Lower Fitzroy

**Fitzroy Basin Association (FBA) is offering support through Capricornia Catchments to graziers who wish to undertake on-ground works to stabilise actively eroding stream banks and gullies in the lower Fitzroy.**

Support includes one-on-one visits, property planning, training reimbursement, and funding for eligible on-ground project activities. A key goal of this project is for participating landholders to develop an improved whole-of-business approach to grazing land management that results in greater on-farm soil conservation.

Reducing soil loss from stream banks and gullies not only reduces the need for expensive remediation works in future, it contributes to improved conditions and water quality in local waterways. Ultimately, this also reduces the amount of sediment transported to Keppel Bay and the Great Barrier Reef.

## Eligible project activities

Projects are expected to follow the **“Reef Trust Phase IV Gully and Stream Bank Toolbox”** guidelines. The following activities are eligible for funding under this project:

- ✓ Stream bank and gully fencing (\*Section 3.1)
- ✓ Revegetation of gullies and stream banks (\*Section 3.2)
- ✓ Sediment filters (porous check dams) (\*Section 3.3)
- ✓ Forage management of paddocks draining to gullies (\*Section 3.4)
- ✓ Water points (\*Section 3.5)
- ✓ Construction of whoaboys (\*Section 3.6)
- ✓ Run-off diversion banks (\*Section 3.7)

\* For more information about what each of these activities involves, refer to the Section indicated, found in the **Reef Trust Phase IV Gully and Stream Bank Toolbox**.

For more information or to register your interest, contact:

Scott Day  
Capricornia Catchments Inc  
Project Officer (Field Services)

☎ (07) 4921 0573  
☎ 0437 293 374  
@ SDay@capcatchments.org.au

Mark Schulz  
Capricornia Catchments Inc  
Project Coordinator

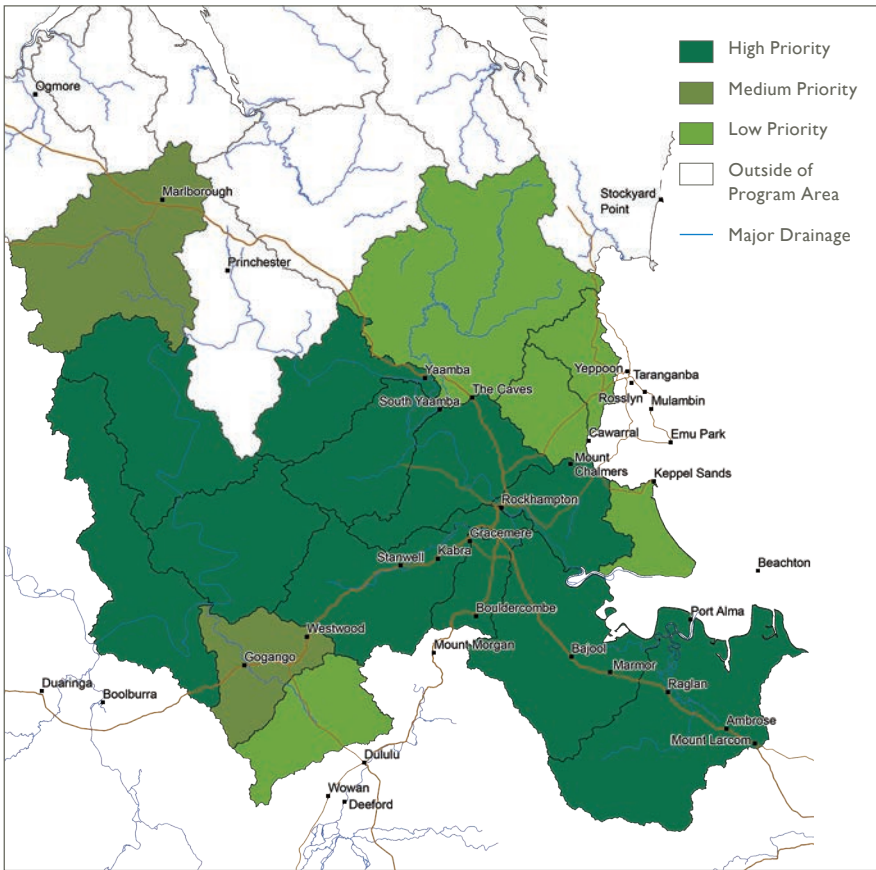
☎ (07) 4921 0573  
☎ 0428 123 527  
@ mschulz@capcatchments.org.au



Capricornia Catchments Inc.

Learn more about Capricornia  
Catchments Inc on our website

[capcatchments.org.au](http://capcatchments.org.au)



**Priority Area Map:** If your property is located in the highlighted sections you're eligible to apply for assistance.

## What to expect

As a project participant, you'll need to commit time and energy throughout the project. How much time and input will depend on the nature and scope of your project contract. Generally speaking, you'll be required to:

- ✓ work with the Capricornia Catchments Field Officer and an FBA Land Management Officer to develop your site plan which forms a basis for your project contract,
- ✓ complete all five Grazing BMP modules\* (a 2-day accelerated program),
- ✓ participate in 'one-on-one' visits with an FBA Land Management Officer and, where applicable, participate in identified training,
- ✓ complete project works as outlined in your site plan within an agreed timeframe (usually within 4-5 months of signing your project contract),
- ✓ maintain the project site and completed works as outlined in the project contract (e.g. fixing fences to keep cattle out, undertaking follow-up weed control),
- ✓ work with the Capricornia Catchments Field Officer to monitor the project twice yearly for the life of the program (this involves taking photos and conducting land condition assessments until July 2022), and
- ✓ keep a rainfall record for the site until July 2022.

\* These must be completed before payment for on-ground works can be made. If you have already completed Grazing BMP, proof of completion must be provided (reassessment will be required if your last module was completed more than two years ago).

This project is supported by Fitzroy Basin Association Inc. through funding from the Australian Government and delivered through Reef Trust.



## Project site requirements

Before registering your interest, please check your proposed project site meets the following requirements:

- ✓ located in the priority area shown on the Priority Area Map,
- ✓ encompasses or adjoins a natural watercourse (this can include seasonal creeks and waterways),
- ✓ has secure tenure (i.e. freehold or leasehold with no foreseeable changes in land use for the next 10+ years),
- ✓ addresses erosion primarily caused by livestock or man-made changes to the area, and
- ✓ benefits a considerable area (project sites greater than 100ha are encouraged)

Project sites that adjoin riparian areas, address significant erosion and benefit an area greater than 100ha are preferred.

If you are not sure whether your project site meets these requirements, please contact us to discuss your situation.

