



Making change happen



Vision

Inspired and empowered communities who value our natural assets.

Mission

To empower our region with the resources, knowledge and skills to maintain our natural assets for future generations.



We make a difference

The Fitzroy Basin has a footprint of over 156,000km² and with more than 20,000km of waterways, **is the largest river system draining into the waters of the iconic Great Barrier Reef**. More than 3,700 agricultural businesses operate in our region, comprising almost 20 per cent of Queensland's 12 million head of cattle.

Fitzroy Basin Association Inc. (FBA) is Central Queensland's leading natural resource management (NRM) group. **We work to protect the Fitzroy Region's special places and unique species, promote sustainable industries, enhance the health of waterways, and reduce the impacts our region has on the Great Barrier Reef.**



The natural assets of Central Queensland are priceless. Maintaining these assets is of environmental, economic, social and cultural importance.

Ian MacGibbon
Chair



FBA continually strives to foster strong partnerships with our local delivery partners, government, land managers and the wider community. Active, working partnerships are vital to our ongoing success and I am proud of the difference our team make to the region through their collaboration and engagement.

Paul Birch
CEO

We support connections to Country

We acknowledge the traditional custodians of the land and pay our respects to the Elders past, present and future, representing the traditional Aboriginal land across the Fitzroy Region. We work closely with Indigenous groups to support their continuing connection to Country, promote and protect the region's cultural heritage values.



Shoalwater Bay

We collaborate

We know our vision is ambitious. To achieve it, we join forces with other organisations and people who have the expertise and knowledge to help us build a sustainable future for the Fitzroy Basin's communities, environment and industries.

We work closely with delivery partners to implement our programs, and much of our work is funded by the Australian Government and the Queensland Government.



Australian Government



Queensland Government

Our delivery partners are:



We also partner with other organisations to deliver specific projects and outcomes. These include:

- » All levels of government and their associated departments
- » Community, industry and Traditional Owner groups
- » Natural Resource Management and Landcare groups
- » Universities, researchers, technical and field experts
- » Other stakeholders with local or regional interests



Fitzroy Partners Network

We partner for greater outcomes



Working together on a shared goal allows us to use our limited resources wisely, for greater outcomes. We contribute to regional planning and initiatives through membership of groups and organisations such as the Local Marine Advisory Committee (LMAC), Capricorn Enterprise, Capricorn Conservation Council and Capricorn Pest Management Group (CPMG). We are also a major partner of and host organisation for the Fitzroy Partnership for River Health and Gladstone Healthy Harbour Partnership – providing a clearer picture on the health of our region's waterways.

We forge key alliances

FBA is a proud member of key, strategic alliances. The Reef Alliance is a partnership between agricultural industry and regional Natural Resource Management (NRM) organisations working together to secure the future health of the Great Barrier Reef, through funding from the Australian Government and delivered through the Reef Trust.

The Rangeland NRM Alliance brings together a network of NRMs to collectively represent the heart of Australia in policy discussions. This alliance provides a platform for nationwide networking, data-sharing, exploration of key issues and brings about important opportunities for collaboration.



REEF ALLIANCE
Growing a Great Barrier Reef



Capricorn Coast



I am proud of the work we do to combine on-ground action with education. While our projects address immediate threats, we also adopt a long-term focus that fosters shared ownership for the care of our local environments.

Rebecca French
Engagement Manager



Fitzroy River Turtle hatchlings

We protect native plants and animals

We work in conjunction with universities, government departments, local councils, volunteer groups, peak industry bodies and other non-profit organisations to reduce the threats to our native plants and animals, including those that are threatened or endangered. Our projects include activities such as nest and habitat protection, weed and feral animal control, monitoring and awareness-raising.

We build capacity

We work to empower our local communities to care for their local environments, and to build their capacity to do so in a self-sufficient, sustainable manner.

FBA and our partners work alongside community organisations, local councils, schools and other interest groups, supporting them to plan and deliver projects that involve members of the public. These projects aim to build knowledge or awareness, encourage behaviour change or provide opportunities to contribute physically to on-ground works.



Tree planting by
The Caves School students

We educate and inform



FLOW is our free educational facility in the centre of Rockhampton that helps raise environmental awareness across the community. We profile the region, its unique plants and animals, industries, communities and habitats through tailored education sessions, interactive displays, school holiday sessions and our FLOW on the Go school touring program. Almost 5,000 people visit FLOW every year.



Support FLOW

Help extend our reach and continue our award-winning community education and engagement programs.

Contact us to learn more.

Creating opportunities for education

As part of our community engagement program we partner with Central Queensland University and Quoin Island Turtle Rehabilitation Centre to offer a weekend of professional development and training to in-service and pre-service teachers each National Science Week.

Experts from Gladstone Industry Leadership Group, the Great Barrier Reef Marine Park Authority, Gladstone Healthy Harbour Partnership, Conservation Volunteers Australia, Boyne Island Environmental Education Centre and Rio Tinto lead the sessions which provide participants with the confidence and knowledge to teach practical, locally relevant science in their classrooms.

The award-winning program supports teachers and other educators, and in turn helps our communities understand more about science, industry and environment.



This is a great opportunity for teachers to experience first-hand how community organisations, industry and government departments are using science in the real world.

Dr Linda Pfeiffer

Lecturer

Central Queensland University

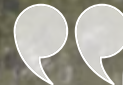


CQ University Excellence in
Engagement-Opal Award

We promote best practices

Together with the Queensland Government Department of Agriculture and Fisheries and AgForce, we developed the innovative and industry-led Grains Best Management Practices (Grains BMP) and Grazing Best Management Practices (Grazing BMP) programs to provide professional development and training to grain growers and graziers.

Our BMP programs include workplace health and safety, land management and business development modules, thus ensuring they meet the industry's needs as well as helping protect our natural assets.



These programs are testament to what can be achieved when we work with our partner organisations towards a common goal: sustainable and profitable farming in the Fitzroy.

Tom Coughlin
Operations Manager

GRAZING BMP

A Grazing BMP training day for staff and students of Emerald Agricultural College was the starting point for a continuing partnership between FBA, our delivery partner CHRRUP and the college.

Since that first Grazing BMP training event, the college's livestock manager, Andrew Lewis, has improved the college's water quality outcomes while teaching students the importance of riparian areas and how to strategically manage their condition. It was particularly beneficial for the students, with one student who was strongly against the project changing his perspective. He then took the methods he had learnt back to his family's property near Roma, developed a whole-of-farm plan complete with costings, and the water quality improvements will be completed soon.



I saw it as a really good fit between the college, being a training place, and also as an example to industry of what's possible between landholders, CHRRUP and FBA. The benefits environmentally, as well as financially, are very good. It helps you to improve your infrastructure, which leads to better management. It ultimately creates healthier animals, which leads to better food.

Andrew Lewis
Livestock Manager
Emerald Agricultural College



The savings on the project is a long-term process, with savings seen now on chemical costs and building up soil moisture to enable planting at the appropriate time, as opposed to waiting for a weather event. The initial results were building up moisture and less erosion with better water management and reduced erosion in gullies. The long-term impact is a more sustainable business.

Russel Ezzy, Grain Grower



Grains BMP

Although initially sceptical, grain grower Russel Ezzy could immediately see the benefits of zero-till farming, despite having reservations about being able to implement the practice change on his property.

Since completing Grains BMP, Russell has developed a long-term plan for his operations, and is implementing it one step at a time. He has removed fences, upgraded machinery and brought in consultants to help him plan his property's layout to make the most of his resources, all while reducing erosion and increasing soil moisture.

We repair landscapes to protect the Reef

The Great Barrier Reef is facing many threats, and both the Australian and Queensland government have committed significant funds to projects that improve its outlook. We implement on-ground solutions that have real, positive impacts on Reef health as well as supporting our region's landholders. For example, reducing sediment loads on the Reef through soil conservation works benefits landholders, local waterways and the Great Barrier Reef.



Erosion at Springsure

Using science to prioritise

At more than twice the size of Tasmania, the Fitzroy Basin is the largest catchment flowing into the iconic Great Barrier Reef. Improving the quality of the water entering the Reef from our region will help protect it for generations to come.

We worked with industry experts, scientists, community and all levels of government to develop the Fitzroy Water Quality Improvement Plan 2015 (WQIP:2015). Using the best available science, this plan directs future investment to ensure the health of our rivers, wetlands and the Great Barrier Reef and to help us meet the ambitious water quality targets set out under the Queensland Government's Reef 2050 Plan.

WQIP:2015 covers the Fitzroy Basin and coastal catchments (Styx, Shoalwater, Water Park Creek, Boyne and Calliope) as well as adjacent marine waters. The plan sets regional water quality targets, identifies priority areas to undertake works and recommends management actions to improve water quality.

As an online resource, WQIP:2015 assembles and presents complex information in a way that can be understood and used by a broad audience. This resource will be updated with new science, as it becomes available, to allow users to quantify the issues impacting on water quality and the Reef and consider the value and effectiveness of potential environmental projects.

Visit www.fba.org.au/wqip to explore the tools included in WQIP:2015.



We help landholders improve their sustainability

Our region's natural assets and industries are under threat from a changing climate and volatile economic conditions. We are working with landholders and industries to encourage practice change that will enhance their profitability while improving our region's water quality and the health of the Great Barrier Reef. Many of our programs include training and tailored support to assist rural landholders in facing their challenges head-on; as well as providing funding towards associated on-ground works for eligible projects.



Managing gullies to reduce erosion

Some of our region's soils are highly erodible, causing gullies that contribute significant and damaging sediment loads to the waters of the Great Barrier Reef. Active gullies also cause significant financial loss to primary producers through lost paddocks, damaged infrastructure and expensive remediation works.

Together with a soil consultant, we trialled remediation works at six sites across our region. Three of those sites were then used as demonstration sites. Interested landholders were invited to visit the sites, discuss the methods used and see the impact the remediation works had on reducing sediment loss. The lessons learnt during the projects, plus the opportunity to speak directly to a soil conservation expert about issues and solutions, empowered landholders to investigate suitable remediation works for their gullies.



It's something that we accept in this country as being fairly normal, having gullies like this, but to some degree in the back of your mind you do know it's like a cancer on your country. Continuing to lose that amount of soil would not only damage valuable grazing land, it also threatened to impact infrastructure such as fences and access tracks. In addition, it would have impacts downstream and the sediment would end up on the Reef.

Chris Walton, Grazier

We empower our communities

Empowering our communities to embrace behavioural and practice changes, and build resilience, is a key component of the work we do. The challenges our industries and communities face are significant, and helping build their resilience in a climate of change is crucial to our region's future.



Flood damage in the Dawson

Building resilience to natural disasters

In January 2013, extreme rainfall associated with ex-tropical cyclone Oswald caused widespread flooding across the Fitzroy Basin. In the following months, we implemented a major recovery program that restored the region's agricultural productivity, repaired damaged waterways, and enhanced our region's resilience to future natural disasters.

The project's success was tested very soon after completion, with severe tropical cyclone Marcia—a Category 5 system—crossing the Capricorn Coast near Byfield in February 2015. Sites that had been repaired as part of the project received negligible damage, demonstrating that our goal to enhance the resilience of these sites was achieved. This is in stark contrast to other areas that were not part of the project, which experienced significant damage during severe tropical cyclone Marcia.

We want to help you be more sustainable, profitable and resilient.

Contact us to find out how we can help.




Highly Commended

2016 Get Ready Queensland
Resilient Australia Awards

We foster innovation

Finding new ways to solve old problems is vital to improving our region's sustainability. We help our communities and industries develop and use new technologies that can solve issues common across landscapes and industries. We help connect people and businesses that have innovative ideas to funding opportunities that will help them develop their concepts to workable, real-world solutions.

In 2010, our Board had the foresight to develop the Innovations Fund to support innovation in the region.



We have always promoted innovative practices. One of the first projects funded through the Innovation Fund was robotic technology with Andrew and Jocie Bate.

Pam Jeffery
Corporate Services Manager

Swarm Farm, Gindie

Robotics in farming

In 2010, Andrew and Jocie Bate had an idea for lightweight, robotic farm machinery that allows farmers to spray with extraordinary accuracy, thus reducing the need for chemicals as well as minimising soil compaction and erosion.

Andrew and Jocie were one of the first businesses to access our Innovations Fund to develop their ideas. Within five years, they brought their machinery to market, creating jobs, bringing skilled workers to rural Queensland, and helping to increase the sustainability of grain growing operations.

Do you have innovative idea and need help bringing it to fruition?

Contact us to see how we can help you.




We started SwarmFarm Robotics because we could see there were practice changes that we needed to make. A lot of our equipment was getting so big and cumbersome and we actually wanted to get back down and farm from the soil up. FBA came on board right back at the beginning. The vision was huge for such a small amount of money. It has been amazing because they've been a partnership right from the start.

Jocie Bate
Founding Director
and Chief Financial Officer
SwarmFarm Robotics

We plan for a sustainable future

Ensuring a sustainable future for our industries, communities and environment requires careful planning. We work with stakeholders, all levels of government, industry and communities to develop regional plans that help ensure our communities are socially, environmentally and economically sustainable for the long term.

A photograph of a man and a young child walking away from the camera on a dirt path in a rural landscape. The man is wearing a blue shirt, jeans, and a hat. The child is wearing a pink shirt, jeans, and a hat. They are walking towards a line of trees in the distance. A wire fence is visible on the right side of the path.

The long-term health of our region matters to all of us. FBA works hard to recognise, plan for and respond to regional changes, risks and pressures that impact upon our diverse landscapes, industry and communities.

Elyse Riethmuller
Chief Operating Officer

'Bunavon', Wycarbah

Putting strategy to work

Our region is experiencing profound change in industry, land use, community and climate. We prepared the Central Queensland Sustainability Strategy 2030 (CQSS2030), drawing on the best available knowledge so we can work together to protect our natural assets: it's vital for our region's continued balanced growth.

CQSS2030 provides a blueprint for how we collectively work together. CQSS2030 acts as an umbrella, providing information, support and strategic direction for a range of activities undertaken by various stakeholders in the region.



Brings together the latest science and knowledge and makes it available.



Provides strategic direction for research, planning and practice change.



Encourages governments, industry and the community to work together.



Connects people to current and recent initiatives.

Where do you link with our strategy?
There are opportunities to partner with us to deliver CQSS2030. Contact us to find out more.
Visit www.cqss2030.com.au to view the plan.

CQSS2030
CENTRAL QUEENSLAND
Sustainability Strategy 2030

Join us

We welcome you to contact us to discuss opportunities where we can work together to achieve sustainable outcomes and promote positive change in our region.

To find out more about our great work watch some of our videos, including our recent annual report on YouTube. Keep up to date with our activities by liking our Facebook page, follow us on Twitter or sign up for our online newsletter via our website.

Contact us

Level 1, 80 East Street
PO Box 139
Post Central Building
Rockhampton Qld 4700



(07) 4999 2800



admin@fba.org.au



www.fba.org.au



@FBAfriend



@FBAUpdate



Fitzroy Basin